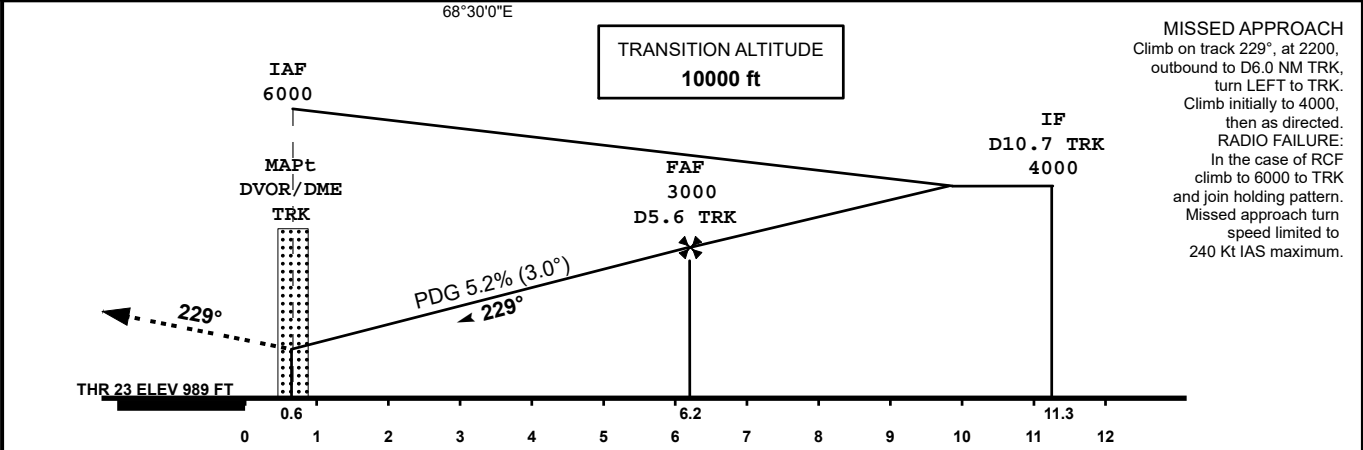
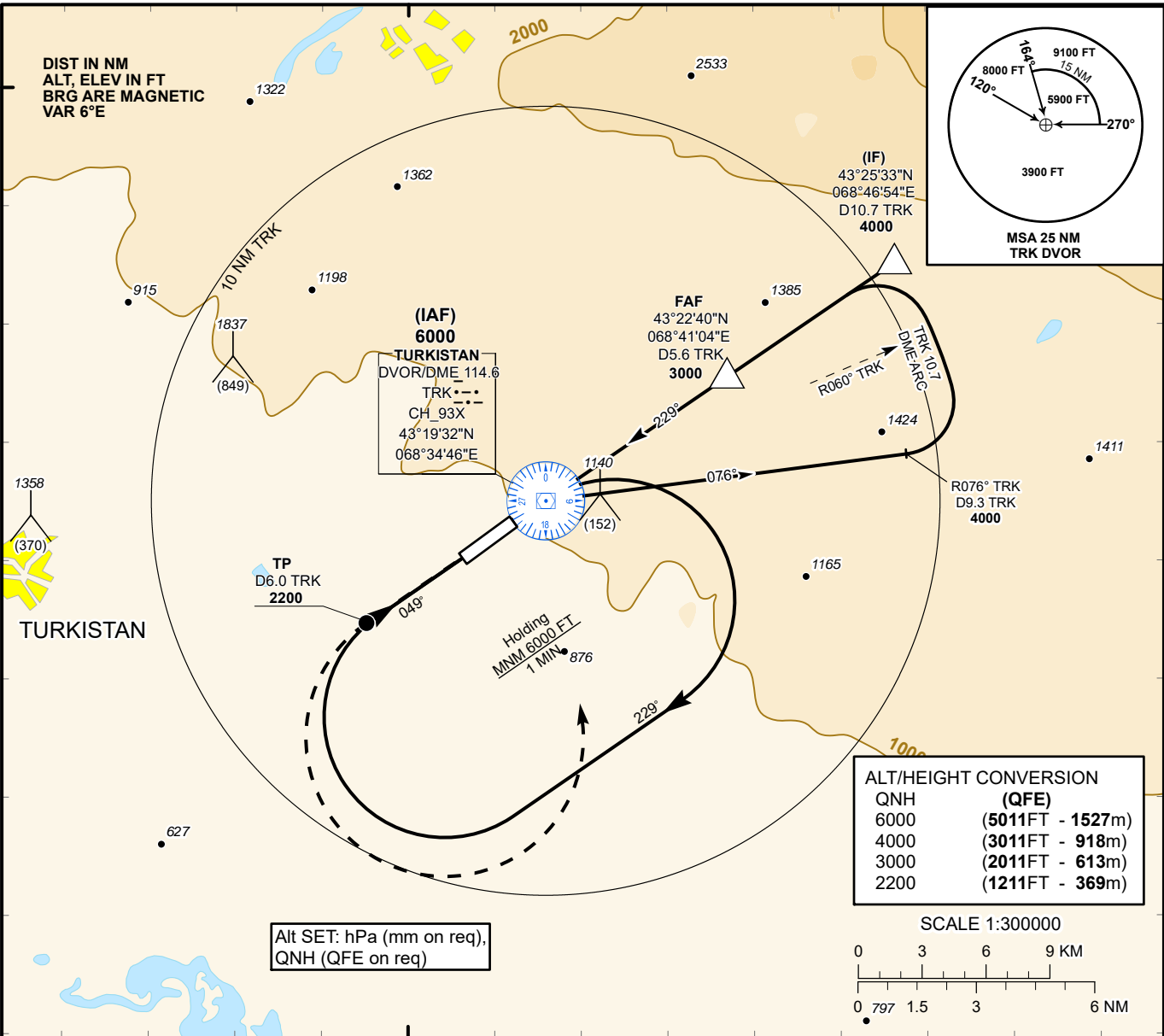


INSTRUMENT APPROACH
CHART
ICAO

AERODROME ELEV **989 FT**
HEIGHTS RELATED TO
AD ELEV

TURKISTAN TOWER 131.3
TURKISTAN ATIS (EN) 124.4
TURKISTAN ATIS (RU) 118.3

TURKISTAN
VOR/DME
RWY 23



MISSED APPROACH
Climb on track 229°, at 2200,
outbound to D6.0 NM TRK,
turn LEFT to TRK.
Climb initially to 4000,
then as directed.
RADIO FAILURE:
In the case of RCF
climb to 6000 to TRK
and join holding pattern.
Missed approach turn
speed limited to
240 Kt IAS maximum.

CHANGE: Add ATIS, editorial.

Aircraft Category		A	B	C	D	DIST to THR	NM	6.2	5.0	4.0	3.0	2.0	1.0
Straight-in Approach OCA/H						DME TRK	NM	5.6	4.4	3.4	2.4	1.4	0.4
	VOR/DME	1470(480)	1470(480)	1470(480)	1470(480)	ALTITUDE	FT	3000	2630	2312	1993	1675	1356
						HEIGHT	FT	2011	1641	1323	1004	686	367
Aerodrome Operating Minima MDH ft x RVR(CMV)													
						GS	Kt	80	100	120	140	160	180
						Desc.Rate (5.2%)	ft/min	420	530	630	740	840	950
						FAF-MAPt	min:sec	3:45	3:00	2:30	2:08	1:52	1:40

TURKISTAN
VOR/DME RWY23

AERONAUTICAL DATA TABULATION

VOR approach to RWY23 from TRK DVOR/DME	
Fix/point	Coordinates
TRK DVOR/DME (IAF)	43° 19' 32.3"N 068° 34' 46.1"E
D 5.6 TRK (FAF)	43° 22' 40.2"N 068° 41' 04.2"E
THR RWY23	43° 19' 10.27"N 068° 34' 01.98"E
Final approach descent angle is 3.0°	